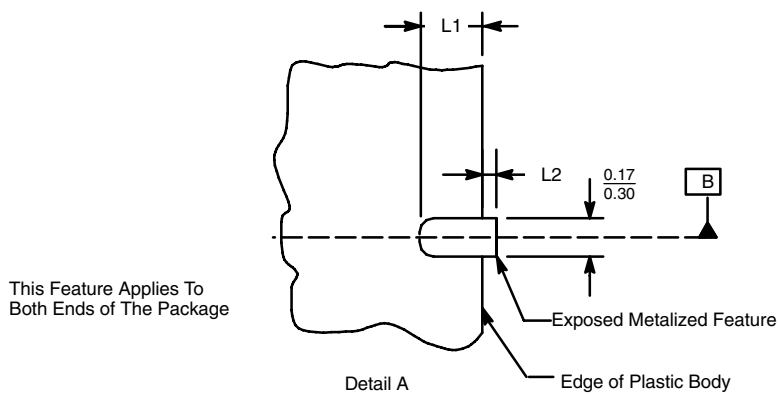
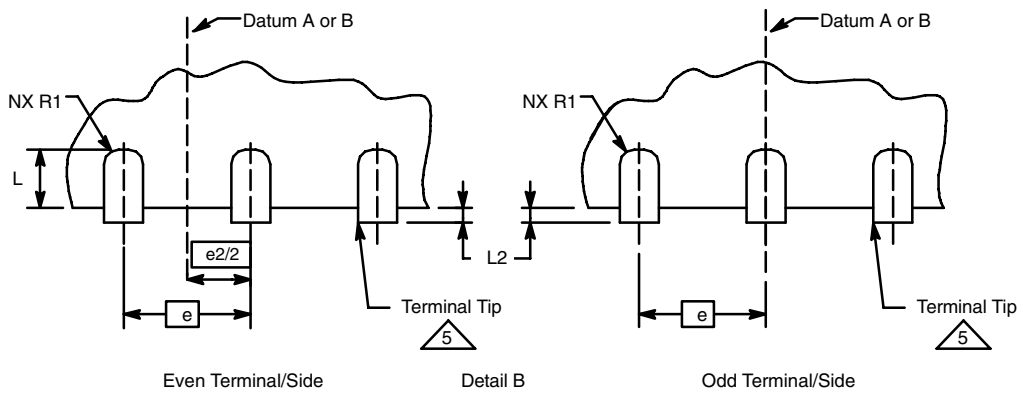
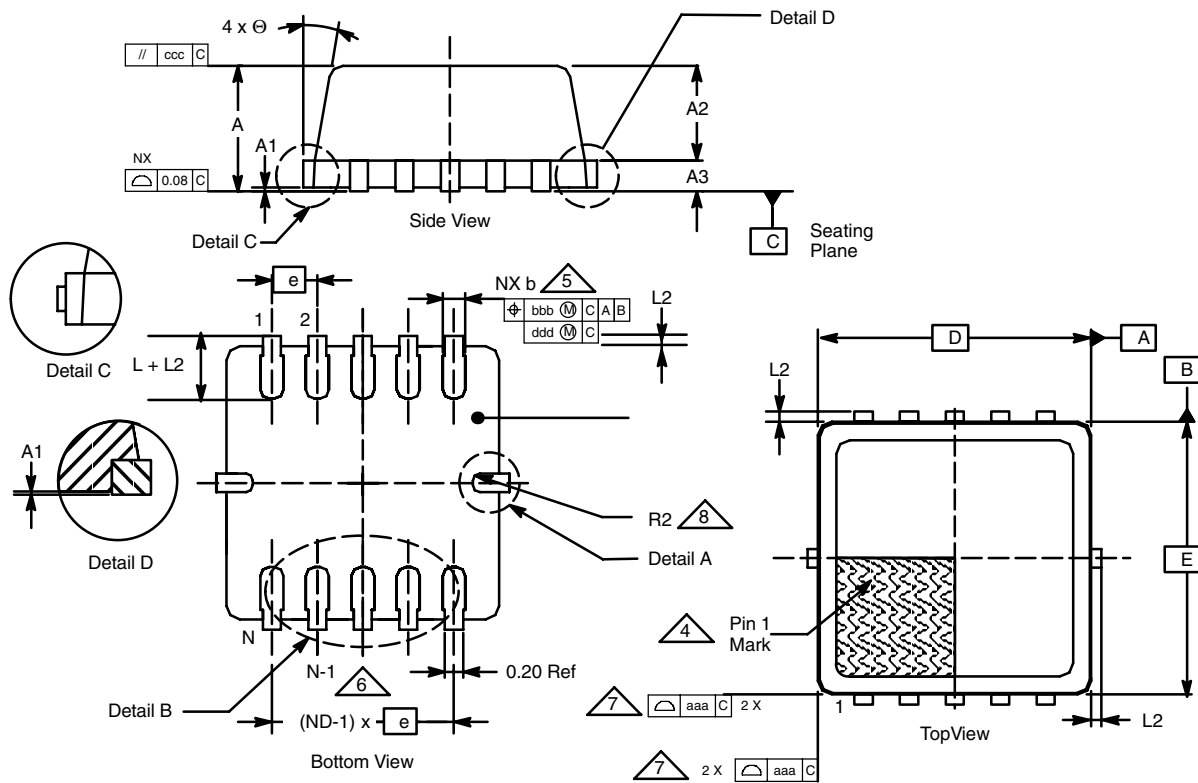




MLP33-10 (POWER IC ONLY)

JEDEC Part Number: Outline is consistent with JEDEC MO229-VEED-2



MLP33-10 (POWER IC ONLY)

N = 10 PITCH: 0.50 mm, BODY SIZE: 3.00 x 3.00

Dim	MILLIMETERS*			INCHES			Notes
	Min	Nom	Max	Min	Nom	Max	
A	0.80	0.90	1.00	0.031	0.035	0.039	1, 2
A1	0	0.025	0.05	0	0.001	0.002	1, 2
A2	0.65	0.70	0.75	0.026	0.028	0.030	1, 2
A3	0.15	0.20	0.25	0.006	0.008	0.010	1, 2
aaa	–	0.10	–	–	0.004	–	1, 2
b	0.20	0.25	0.30	0.008	0.010	0.012	5, 11
bbb	–	0.10	–	–	0.004	–	1, 2
ccc	–	0.10	–	–	0.004	–	1, 2
D	3.00 BSC			0.118 BSC			1, 2
ddd	–	0.05	–	–	0.002	–	1, 2
E	3.00 BSC			0.118 BSC			1, 2
e	–	0.5	–	–	0.002	–	
e2	1.10	1.20	1.30	0.043	0.047	0.051	1, 2, 9
L	0.45	0.58	0.65	0.018	0.023	0.026	1, 2
L1	0.20	0.29	0.45	0.008	0.012	0.018	1, 2
L2	–	–	0.125	–	–	0.005	5, 11
N	10			10			3
ND	5			5			6
R1 Ref	–	0.100	–	–	–	–	5, 11
R2 Ref	–	0.075	–	–	0.003	–	1, 2
∅	0°	10°	12°	0°	10°	12°	1, 2

* Use millimeters as the primary measurement.

ECN: S-52448—Rev. B, 28-Nov-05
DWG: 5924

NOTES:

1. Dimensioning and tolerancing conform to ASME Y14.5M-1994.
2. All dimensions are in millimeters. All angles are in degrees.
3. N is the total number of terminals.
4. The terminal #1 identifier and terminal numbering convention shall conform to JESD 95-1 SPP-012. Details of terminal #1 identifier are optional, but must be located within the zone indicated. The terminal #1 identifier may be a molded, marked, or metallized feature.
5. Dimension b applies to metallized terminal and is measured between 0.15 mm and 0.20 mm from the terminal tip.
6. ND refers to the maximum number of terminals on the D side.
7. Profile tolerance (aaa) will be applicable only to the plastic body and not to the metallized features (such as the terminal tips and tie bars.) Metallized features may protrude a maximum of L2 from the plastic body profile.
8. The corner will be sharp unless otherwise specified with radius dimensions.
9. Package outline is consistent with JEDEC M0229-VEED-2.